

# Uninstalling Secure Remote Worker (SRW/Thinscale)

## Introduction

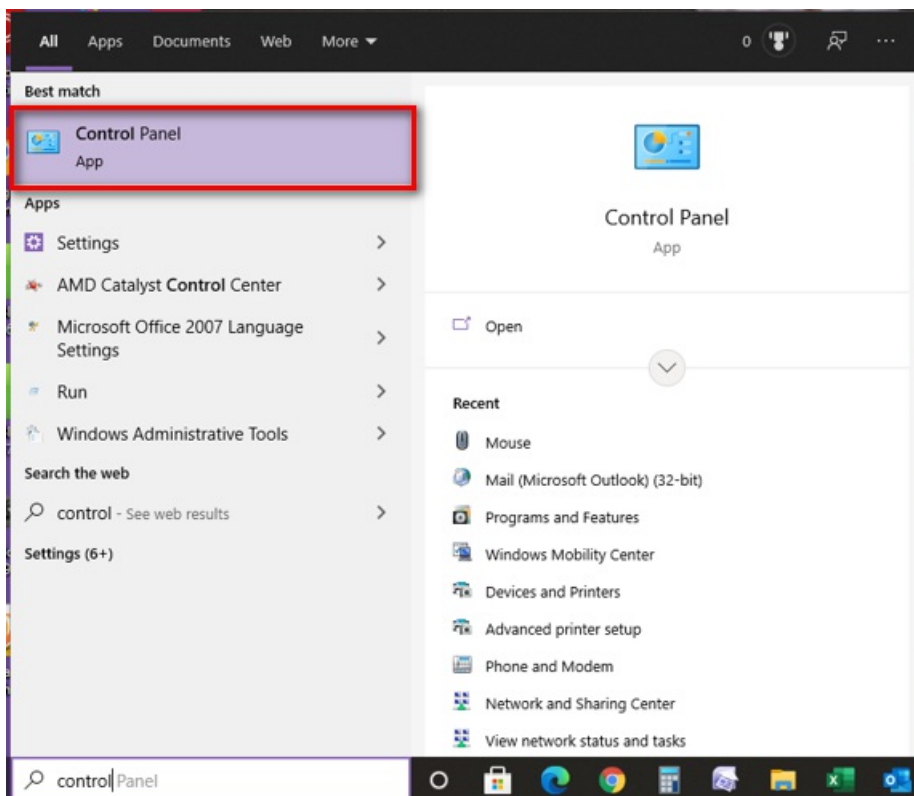
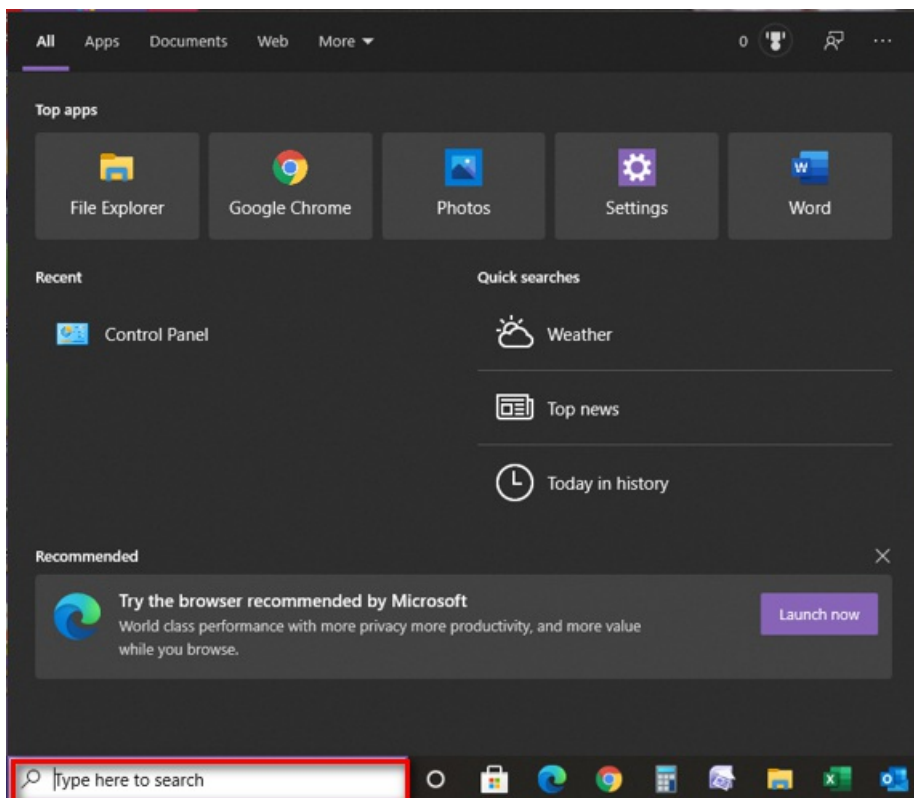
For campaigns/agents that are migrated to Citrix Workspace to connect into the VDI, they will no longer need Secure Remote Worker (SRW/Thinscale). Process details how to remove SRW from their home systems.

## Details

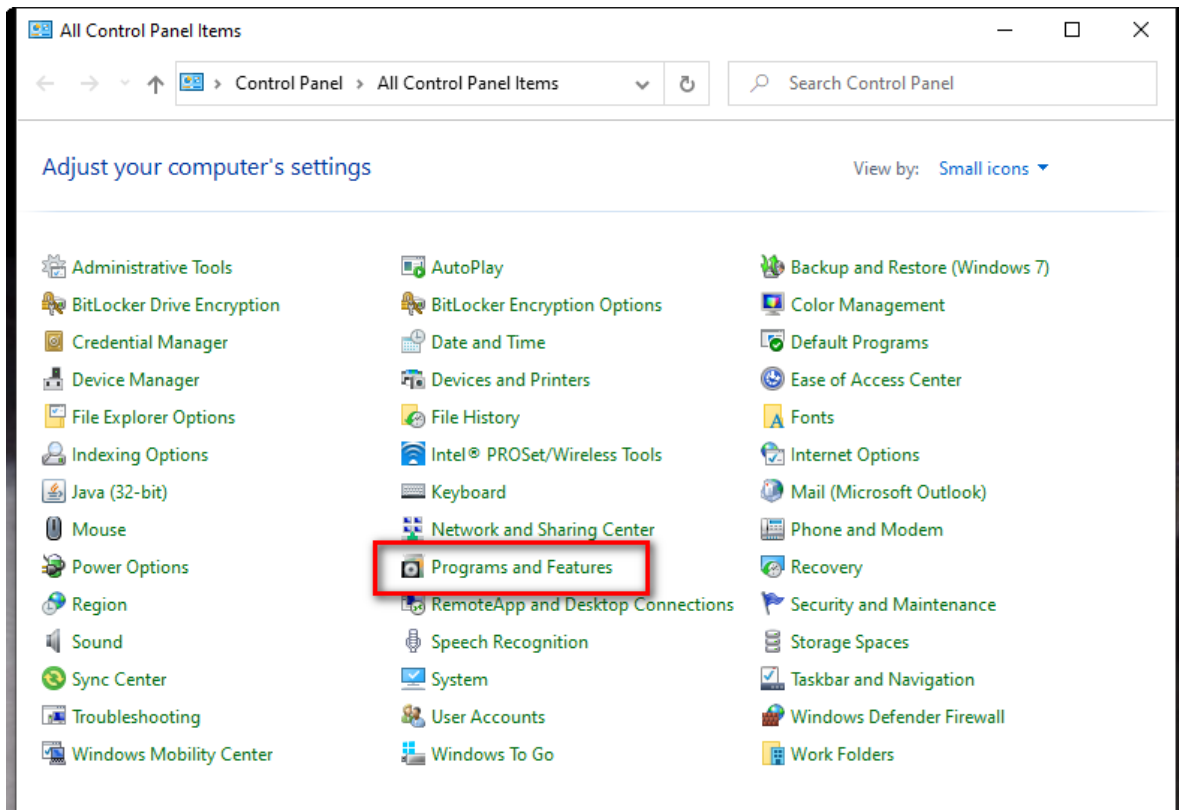
1. **Right-click** on the **Start Menu** and click on **Search**.



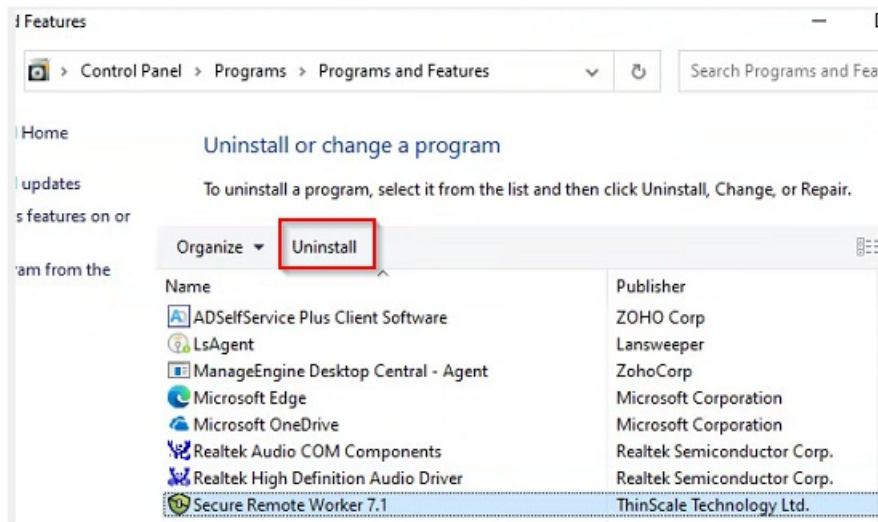
2. In the **lower left-hand corner**, enter **Control Panel** in the box and press **Enter** or **click** on the **Control Panel** app.



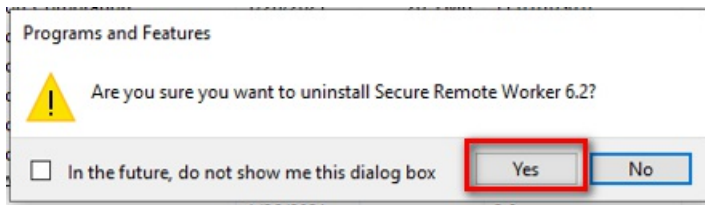
3. Click on **Programs and Features**.



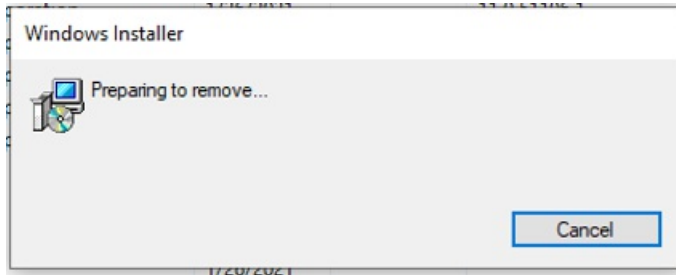
4. Click once on **Secure Remote Worker** to select it and then click on **Uninstall**.



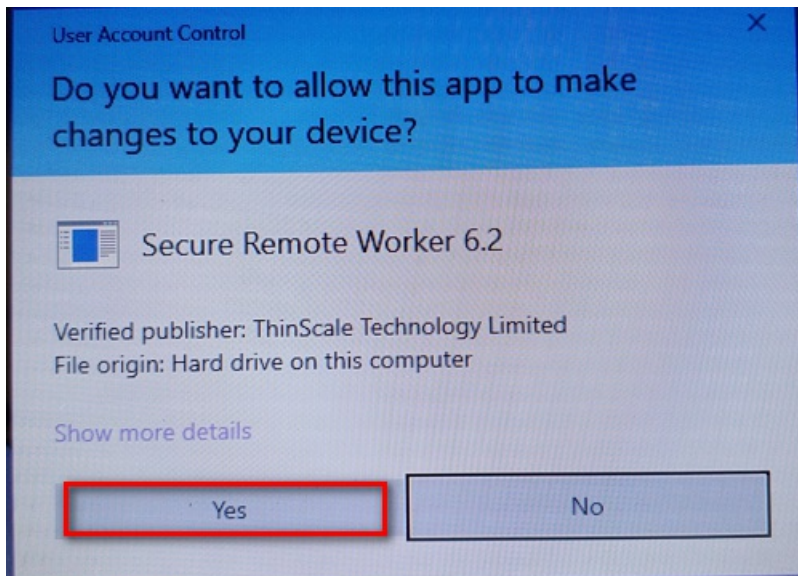
5. Click **Yes** confirming you want to uninstall SRW.



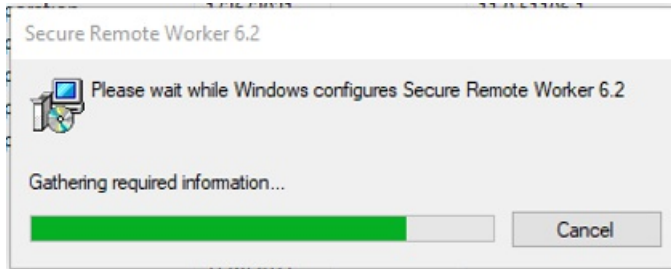
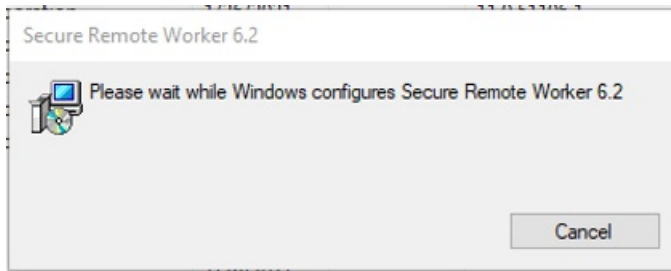
6. The Preparing to remove screen will appear and run for a while.



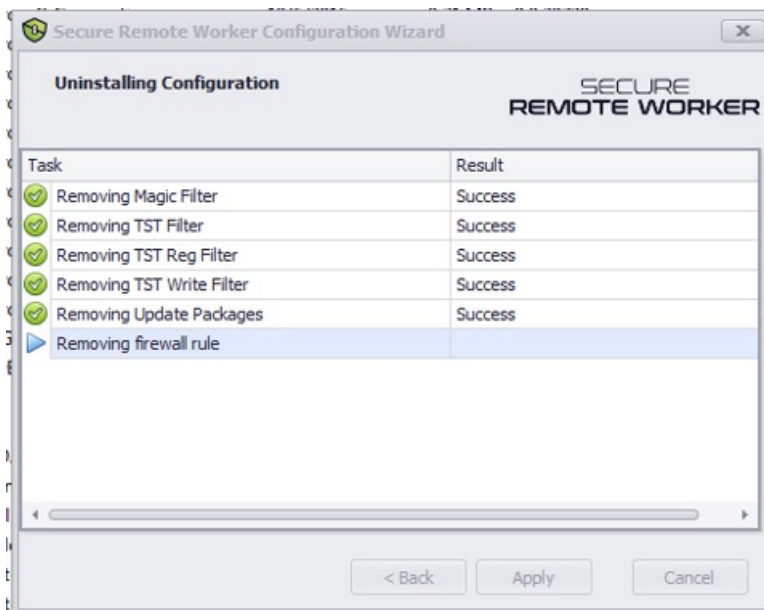
7. Click on Yes when the "Do you want to allow this app to make changes to your device?" appears.



8. The "**Please wait while windows configures SRW**" screen will appear and run for a while.



9. The Uninstalling Configuration screen will appear and run for a while.



10. Once the SRW application is uninstalled, **restart your PC afterward** and then SRW is gone.

## Related Articles

## Revision History

Date Created: 10/20/2021 11:33 am EDT

Last Modified: 10/20/2021 11:34 am EDT